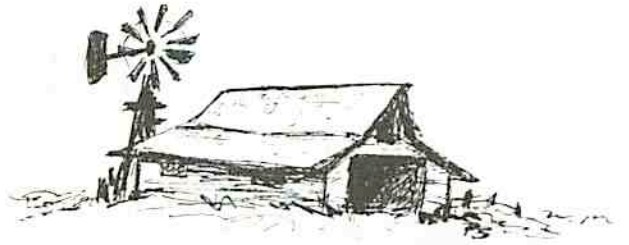


# ALMONT GOVERNMENT



## TOWN BOARD

L to R: Conrad Christianson, Ben Ramsland, Don Schermerhorn, Claude Ritz, Lawrence Renner and Eugene Peterson.

Almont and Sims were both a part of Sims Township.

The earliest records we can find from Sims civil township 138-86 is dated April 15, 1918; it was then an organized township and as such had a governing body. In 1918 Rickart Olson was chairman of the board, a position he held for many years. Theodore O. Feland was Clerk, E.E. Templeton and C.A. Knutson were Supervisors; Justice of the Peace, G.H. Anderson; Constable, George Ims; Treasurer, N.E. Becklund; Assessor, O.G. Thorson and Road Overseer, Rick Olson. Meetings were held at the Farmers State Bank. \$3,000 was the tax levy for road and bridge work and for assistance to the poor. Road work was done with horses; wages paid were 60 cents per hour for man and team, 30 cents for man alone. In those days cinders from the railroad were hauled and dumped in the low muddy spots; cinders were easier to load than gravel or scoria. The township equipment and personnel graded the Almont

streets and plank sidewalks were built and maintained by the township.

In 1936 the village of Almont decided to incorporate and it was only a few years later that Sims civil township dissolved, because the county equipment was doing practically all of the bridge and road work. Almont took approximately two sections into the village limits; by so doing substantial railroad valuation was included to help out on taxes. Taxes were not a big problem in Sims township when the Northern Pacific was operating; there were 18 miles of track, including side tracks, so 73% of the taxes were paid by the railroad.

In 1968 the village became a city with council type government. Present officers are: Claude Ritz, Mayor; Gene Peterson, Conrad Christianson, Lawrence Renner and Don Schermerhorn, Councilmen; Ben Ramsland, Auditor; Alma Olson, Treasurer; Goldie Renner, Assessor and Noreen Willman, Water meter reader.

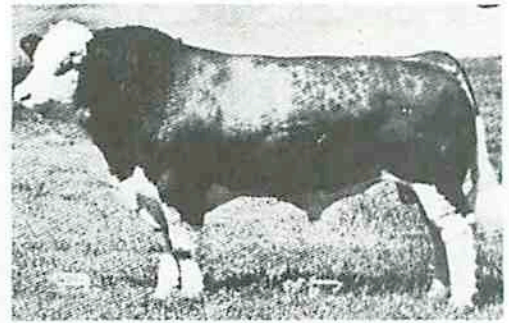
# DOLL CHAROLAIS & SIMMENTAL RANCH



CCR COMMANDANT 491 (Polled)

OTHER SIRES:

Cyrano  
Alger  
Abraham  
Bingo



EXTRA

OTHER SIRES:

Galant  
Black Diamond (Polled)  
Baron  
Usch

---

Joseph D. Doll & Sons  
NEW SALEM, N.D.

---

Rt. 1 - Box 16 Phone 843-7107  
Ranch Located 2 Miles North  
and 1 Mile West From I 94 Exit # 28

---

REGISTERED & PUREBRED BREEDING STOCK FOR SALE AT ALL TIMES

---

DEALER FOR



PLANTERS SOIL BUILDERS



MINERALS



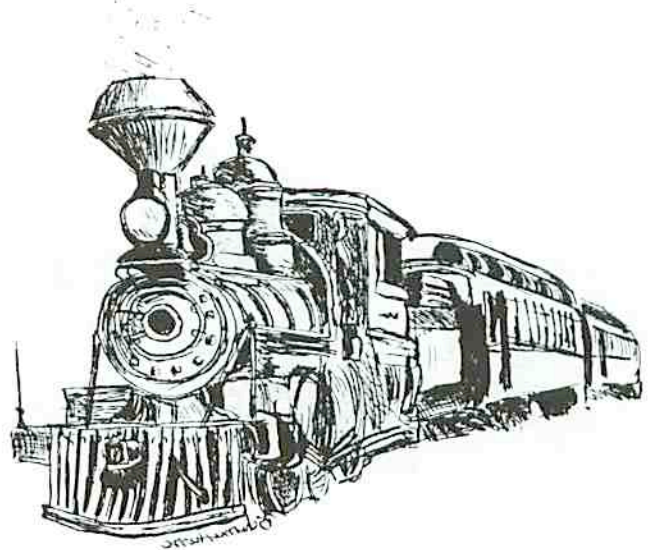
HOG BUILDING and EQUIPMENT



# BUSINESSES - THEN & NOW

*There are only three of the original business places, built in 1906, which have continued with the same service throughout the years since Almont started - the lumber yard, implement store and hotel. I have attempted to compile history of all the business establishments on Main Street since Almont's beginning. There may be mistakes or omissions, but it was the best I could do.*

Sig



## POST OFFICE



Post Office - 1938

On August 16, 1906, an application was made to F.H. Hitchcock, First Assistant Postmaster General, for a Post Office at Almont, asking for prompt action. Nearest railroad...Northern Pacific; nearest station...Sims; nearest post office... Sims, 4½ miles north; Glen Ullin, 16 miles west; Heart, 14 miles south; nearest river...Heart, 10 miles; nearest creek ...Curlew, 6 rods. Population to serve 300. Post Office to be located in NW¼ sec. 35-138-86. Proposed Postmaster, E.E. Templeton. The application was granted. Mr. Templeton served in this capacity in a building south of the Nelson Hardware Store until 1913. We have pictures showing that the post office was located in the Dave Pederson store for awhile; we do not know the circumstances.

On Nov. 15, 1913, Cornelius Knutson became postmaster and the post office was moved to the Knut-

son store. On April 24, 1918, Clifford Kelsven became postmaster and moved the fixtures to his place of business. After a few years he built on an addition to the north and moved the fixtures there.

With the change of political administration to Democrat, Otis Malone became postmaster on Dec. 22, 1933. He operated in the same location until 1937 when the old Almont Advertiser building, which had also served as the first post office, was moved to the present location of the post office.

On Oct. 1, 1945, Ben Ramsland was chosen postmaster. The position was no longer political. In 1959 Ben built a new concrete block structure on the same location where the service has been maintained to date. Ben Ramsland retired in December 1974.

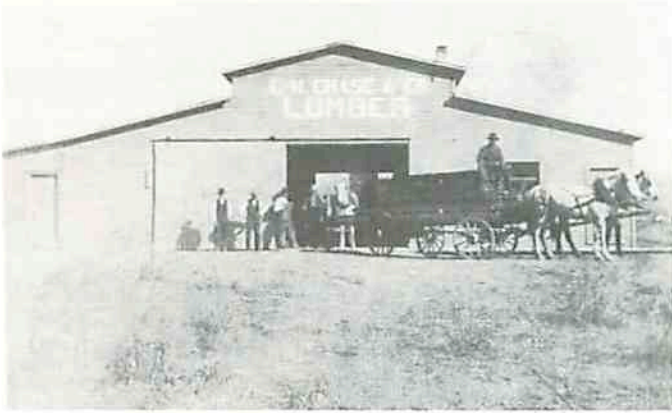
Marvin Olson was then appointed postmaster and served until his death in October 1978; At present, Goldie Renner is postmaster.



Post Office - 1981



## LUMBERYARD



E.W. Hyde's lumberyard, Almont, ND, 1906

The first place of business established, when Almont was founded in 1906, was the C.H. Chase Lumber Company, managed by Almont's founder, E.W. Hyde. A lumber company has been maintained on the same site ever since.

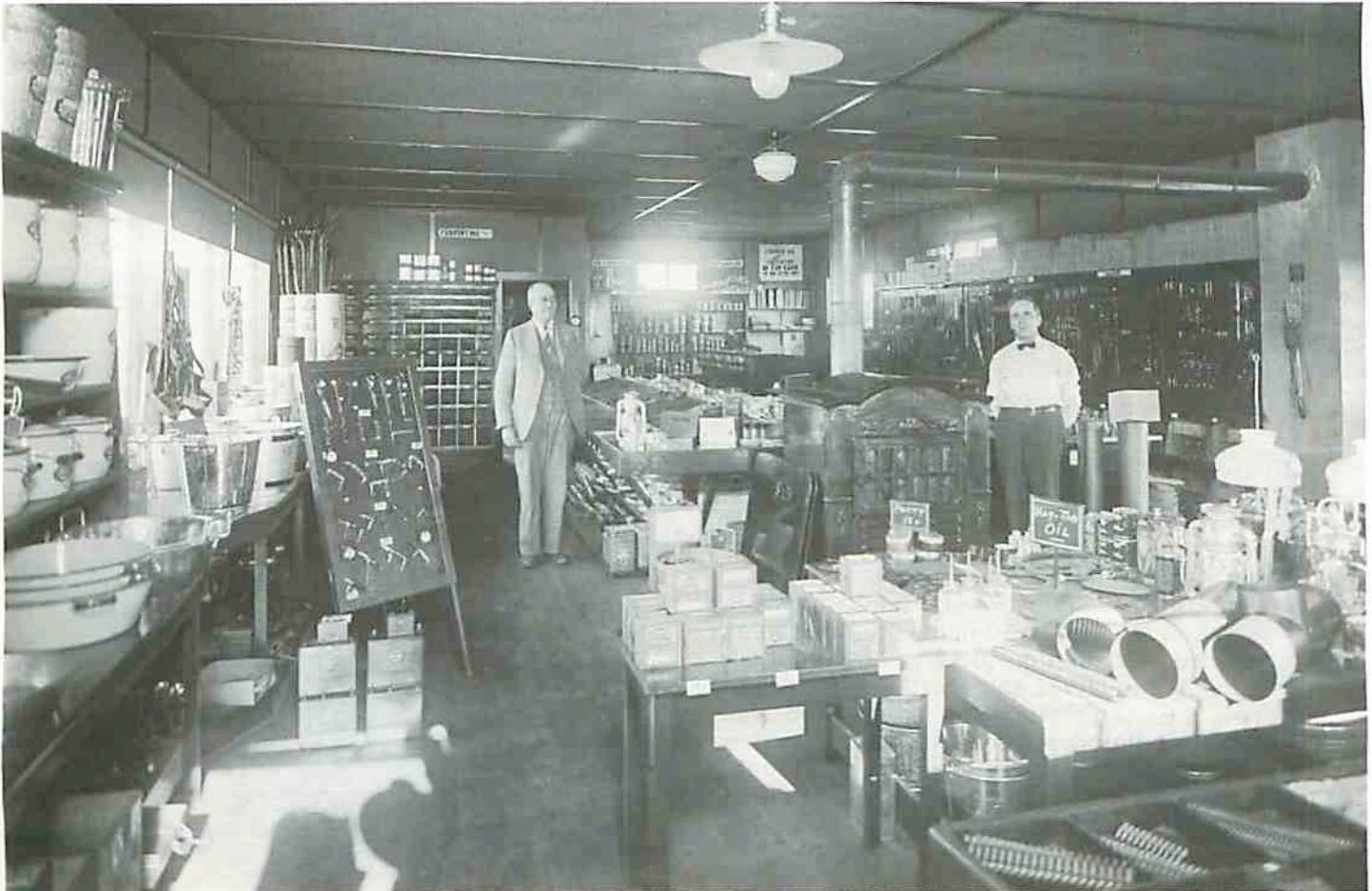
In 1909 Louis Stoeckel came from Bryant, SD, to assist in the operation of the company. He remained a part of the organization for 38 years. In June 1910 fire consumed the entire lumberyard, but it was quickly rebuilt. Lumber, cement, sand and gravel came to Almont by rail freight until train service was discontinued. Since then, all material has been trucked into Almont. Farmers would come from all directions with team and wagon, usually hauling



Almont Lumber and Equipment Co.  
New addition and expansion - January 1981

wheat to town and taking lumber home. Some came from as far as the Cannon Ball River.

Andrew Willman purchased the business from E. W. Hyde in 1949. He operated the Willman Lumber Co. until he sold to Marshall Feland in 1970. It is now known as the Almont Lumber and Equipment Company. The customers still come from a 50-mile radius to get construction material. Marshall Feland also has a yard in Carson.



Interior of Almont Lumber & Hardware store - 1930. Pictured are E.W. Hyde and L. Stoeckel.





**First Northwestern Bank of  
Mandan with a century-old  
reputation for service and  
dependability congratulates  
Almont on its 75th  
Anniversary**

**FIRST NORTHWESTERN BANK**  
Of Mandan

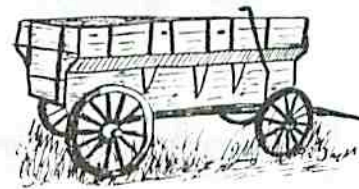
An Affiliate of Northwest Bancorporation  
Telephone (701) 663-9805  
Member FDIC



## IMPLEMENT STORE

This machinery and hardware business was started in 1906 by Jens Nelson and Sons. The main building is the original. They handled Deering and McCormick machinery, harnesses, wagons, etc. In 1913, E.E. Templeton joined the firm, it then became the Nelson-Templeton Implement Company. The machinery then was mostly McCormick, Deering and later International Harvester.

A small building south of the hardware store was Mr. Templeton's Real Estate office and also served as the first Post Office. That building became the Harness Shop of Nelson-Templeton Company. A repair service was maintained in a separate building. The old Dance Hall from down by the railroad tracks was moved up to enlarge the store building; that now serves as the shop. Mr. Templeton retired in 1945; then for two years Pete and Art Nelson owned and operated the business. In 1947 Al Stegmeier and George Kaelberer bought the business and later Stegmeier bought Kaelberer's interest. Al Stegmeier sold the entire stock by liquidation auction in 1955. For one year Almont had no hardware store but in 1956 the Farmers Supply Company Incorporated was organized, shares were sold at \$100 each. Harvey Thorson and Everett Olson were the first managers. Everett Olson sold his interest to Harvey after a few years and since that time managing operators have included: Wayne Becher, Ed Weinberger, Wilbert Hoerauf, William Knutsen, Lawrence Renner and presently Gene Peterson. A good parts and repair service has been maintained throughout the years.





# Congratulations Almont

on your  
75th Anniversary



**Mandan Elks**  
**1256**

*Fine Foods & Beverages*

106 4th Ave. NW

**663-7463**

## HOTEL - CAFE



L to R: Tillie Jacobson, Ragna Aanstad, Albert Aanstad, Louise on her dad's lap - 1915 - note the grass on Main Street.

This is one of the first buildings constructed in Almont. John Tischler built it in 1906; it was then referred to as the Tischler Hotel. Since that time it has been continuously maintained as a hotel and restaurant.

Tischler sold to Pippin; Albert and Ragna Aanstad operated it in 1915 and changed it to Merchants



Hotel. Tenius Ramsland in 1916; Jonas Olin; Jim Bateman 1922; Lee Thurman 1926. The Walter Petersons took over in 1929, redecorated it and named it the Cozy Inn. In 1946 Ida Olson operated a lunch room there. Ida sold to Harold Halvorson, he in turn sold to Martin Hoerner in 1947.

Ralph and Pearl Tavis started operating the business in 1948. We feel fortunate, for a town of this size, to have the convenience of a hotel and cafe. Pearl has added laundromat facilities. The Commercial Club members have their monthly dinner meeting in the cafe and Pearl also prepares the meals for the Senior Citizens Nutrition Program.

Other names entering into ownership or operation of the business may have been Jacob Omdahl and Lundstrom.







## THE FARMERS STATE BANK ... DON'S BAR

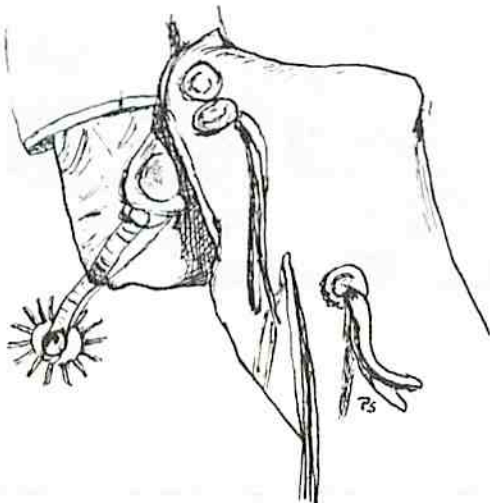
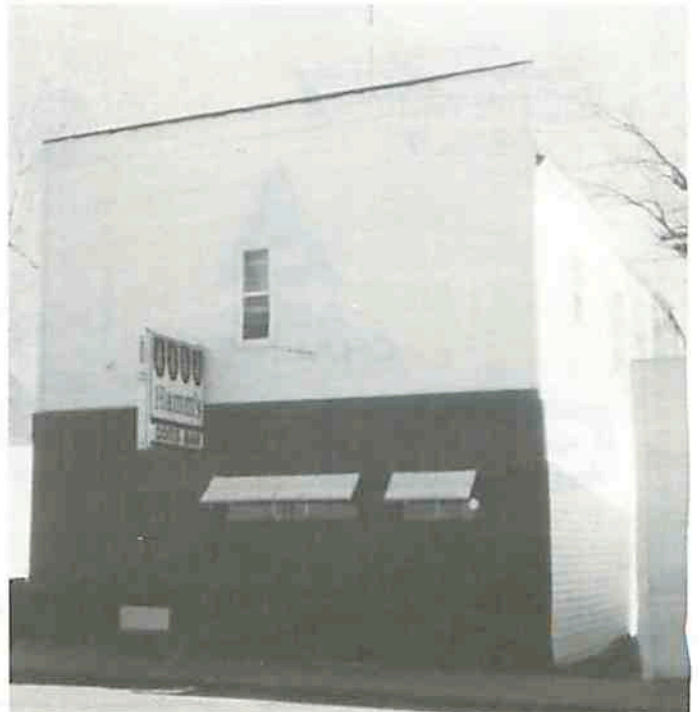
The Farmers State Bank operated here from when it was built in 1907 until the bank closed in the fall of 1931. That was known as the Crash Period, when the doors were closed on many banks. G.H. Anderson and N.E. Becklund were the bankers and they also sold insurance and real estate. The Western Dakota Land and Loan Company had an office here. Mr. Becklund was also a legal advisor.

In 1941 William Joersz remodeled the building and started a Red and White Grocery Store. Bill moved to the "Kelsven" store building in 1945. In 1946 Claude Ritz remodeled the interior and started a bar. Idar Handegard operated the bar for a short time, then

Claude again ran the business until he sold to Robert Timpe. For the past years it has been owned and operated by Don and Pat Schermerhorn.

The living quarters upstairs have been occupied by a number of families. In 1907 three families resided there: Pecks, Brauns and Wagners, a total of 13 people. The Schermerhorns now live there.

Don's Bar





*Congratulations to Almont on your 75th.*



## **Twin City Implement**

**Mandan, N.D.**

**Peter Ray Deichert**  
MANAGER

**Robert John Deichert**  
SALES MANAGER



## **Deichert Chevrolet Co.**

**Flasher, N.D.**

**Dennis Lee Deichert**  
MANAGER

**Donald James Deichert**  
ASSISTANT



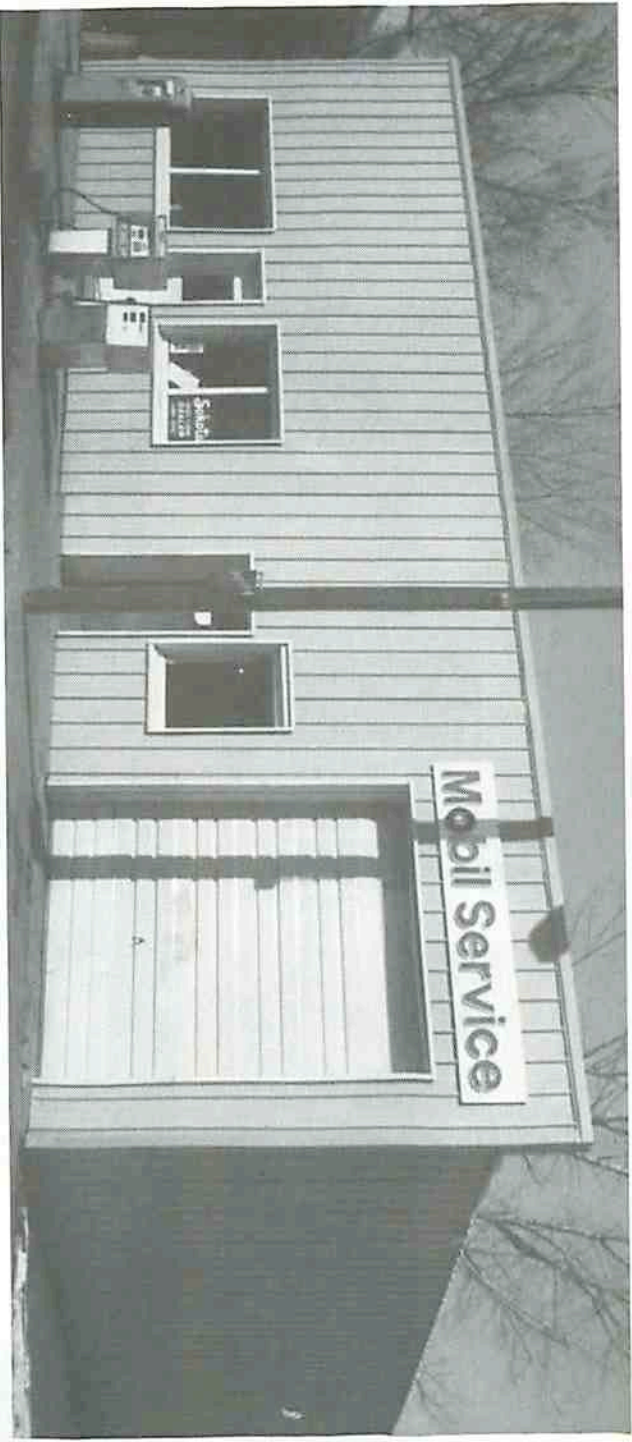
**Peter Deichert, Sr.**  
PRESIDENT

**Mary K. Deichert**  
VICE PRESIDENT



Serving the area for 33 years.





## ALMONT SERVICE STATION

managed by Morris Christianson from 1954 to 1966; the next operator was Donald Knutson, followed by Leonard Hunter and later David Ritz. In 1976 Ed Thiel bought the business; he and his wife are still running it. Ed built an addition to the north in 1977 and started handling livestock feeds.



The south portion of this building was constructed by Joe Hoovestol for a garage and service station in 1930. It is located on the lot where the John Frey store, built in 1907, was located. That building burned in 1915 when it was known as the Timmerman Store. Joe Hoovestol built a garage on this lot; it was later sold to Mr. Becklund and it became known as the Banner Oil Co. service station. The Banner Oil Co. was organized in 1923; bulk gas tanks were immediately purchased and rural gas delivery was begun. Arnold Joertsz and Ed Kilen purchased the business from the Banner Oil Co. In 1963 the Almont Oil Co. Co-op was organized and shares were sold. That company operated the business for a few years and was later sold to Claude Ritz and Val Kary. The service station and bulk gas business was



## OLSON'S SUPER VALU

December of 1960 and have maintained a grocery and general merchandise store to date.

In 1960 Ida and Iner Olson built a new cement block store building on the old Hiram Golf and Sherwood Hotel lots. They opened for business in

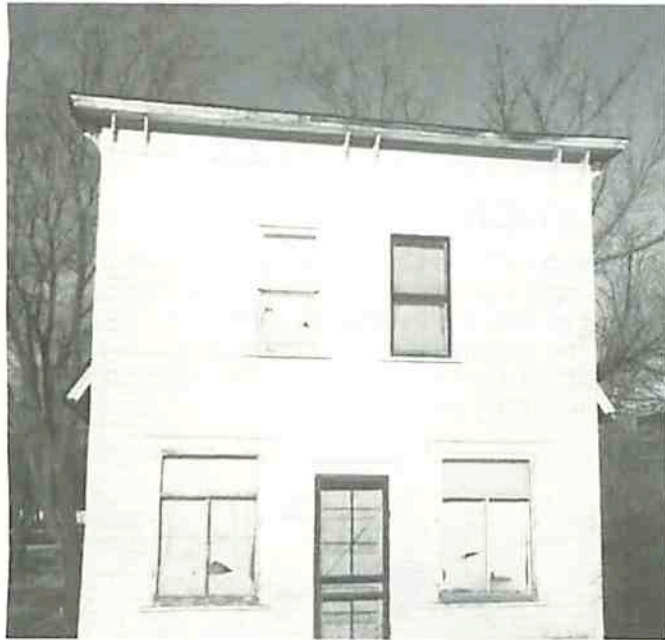




### SITE OF NEW BANK

The Bateman "Red Star Cafe" was originally located on this site; it was one of the buildings which burned in the big fire of 1923 which also destroyed the Mitzman Store. Later the lot was the site of a gas station, first operated by J.R. Bateman and later by Clint Wright.

The Security State Bank of New Salem erected a new Almont Bank branch building in 1979.



### BEN OLSEN DWELLING

Ben Olsen built this building in 1923 and he operated a cream station and repaired shoes and harnesses. After Grandpa Ben passed away in 1946, Mrs. Olsen continued to live here for several years. The house has been vacant most of the time since she moved out. Ben Ramsland now owns the building. In 1907 the Davenport Brothers built a Drug Store on this lot which burned in the 1915 fire.



*Congratulations Almont  
on your  
75th Anniversary*



**American Legion  
Auxiliary**

Almont, ND

### LEGION HALL SITE

← The Almont Pharmacy, operated by Hurley, was originally located on this site. In 1919 the building was sold to Harry Mitzman who had a general merchandise business which was called the Almont Bazaar. The building and business was sold to Carl Hill in 1923 and later that year burned to the ground. The fire also consumed the adjoining building.

The Legion Hall was built in 1948.



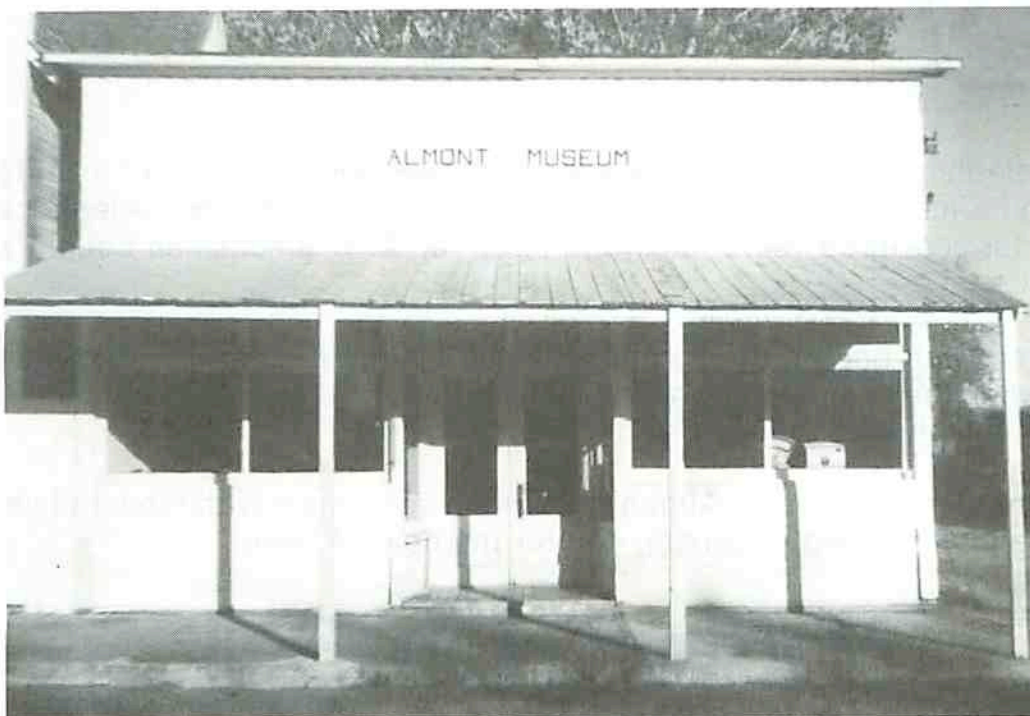
## ALMONT MUSEUM BUILDING



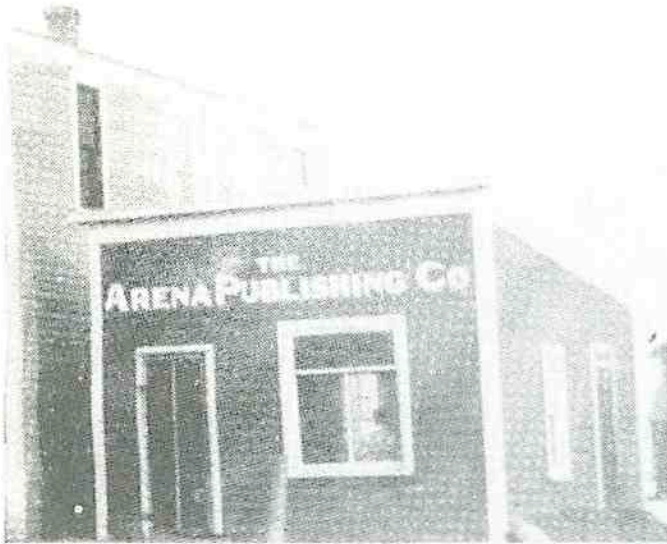
This also was one of the first buildings; erected in 1907. Andrew Knutson and son operated a general merchandise business here. C.A. Knutson later took over management and had the post office in the building from 1913 to 1918. John Hansen sold paint in this building for a few years and also mixed the paint here. After prohibition days were over, John Knutson operated a bar in it for awhile. In the 40's Chris Halvorson used it for a dry goods department,

adjacent to his grocery store. Wm. Knutson had a grocery business from 1946 to 1950; his father had been the original merchant.

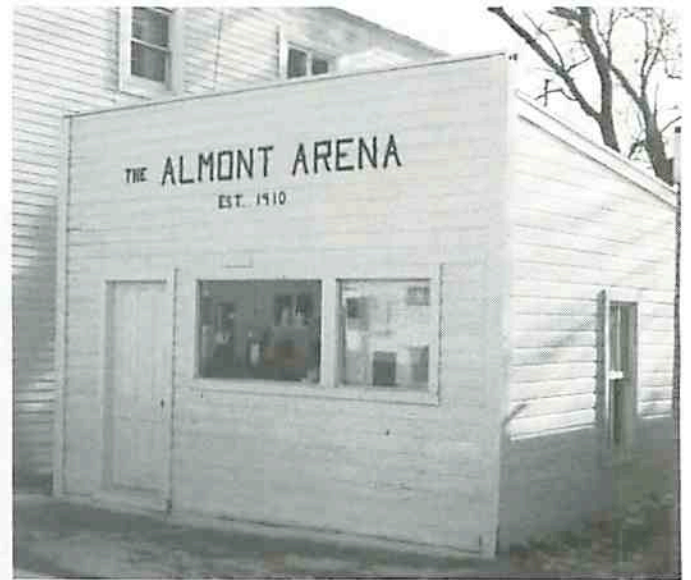
Ben Ramsland purchased the old building and donated it to the Almont Historical Society. It has been repaired and an overhang built over the sidewalk. The old post office equipment is back in the corner where it was in 1913-1918.



## THE ALMONT ARENA BUILDING



This is one of the first in Almont. The Almont Arena, a weekly newspaper, was edited here starting in December 1910 with Rad Lindner as the first editor. The paper changed hands several times and the last issue came off the press in June 1914. Pictures show that there was a barber shop here at one time. The first fire fighting equipment was stored here for many years. At one time there was an ice



skating rink next to this building and it served as a warm-up station. Cream cans were also left there to be picked up for marketing.

It was restored during the bicentennial year and printing equipment was donated by Bud and Minnie Rapsavage of the New Salem Journal. It is probable that some of this equipment originally came from this building.

## TELEPHONE SERVICE HAS COME A LONG DISTANCE . . .



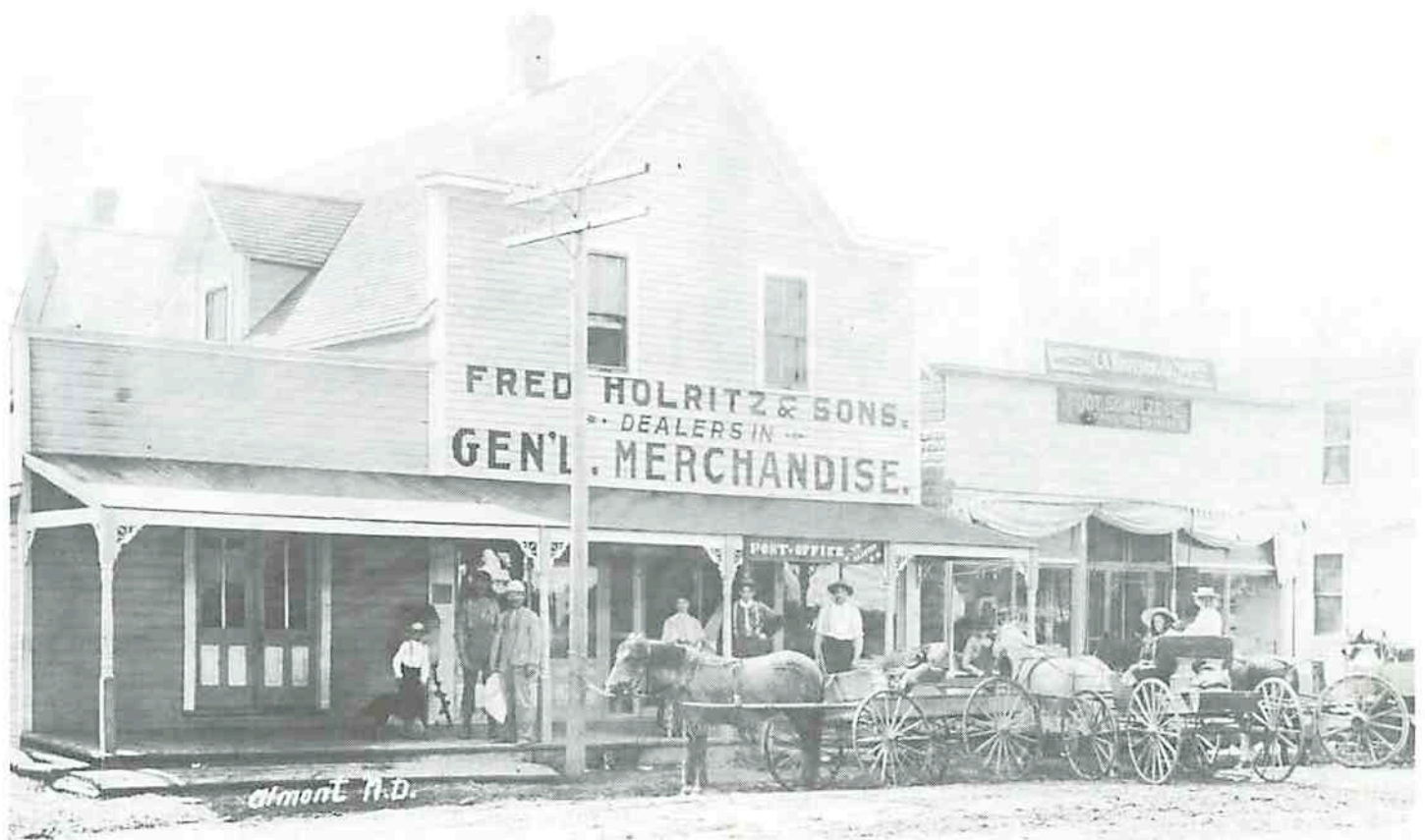
The first telephone service came to Almont in 1926 when a group of local farmers formed the Farmers Cooperative Telephone Company. The Almont Telephone Company was formed three years later when a group of businessmen bought the exchange.

Northwestern Bell bought the company in 1967. Almont achieved statewide fame that year when the community was the last North Dakota town to be converted from hand-crank telephones to new dial phones.

Today, we're pleased to serve Almont telephone customers with modern telephone service. We look forward to serving you for the next 75 years.

# Northwestern Bell





## FORMER GROCERY STORE

Fred Holritz Sr. and Sons built this building in 1907 and operated a general merchandise store. Mr. Holritz had a similar business in Sims before moving to Almont. The store and business was sold to C.E. Kelsven in 1913; Mr. Kelsven sold groceries, dry goods and meat. In 1918 Mr. Kelsven became the postmaster; the post office fixtures were moved into the store. In 1924 an addition was built to the north; the post office was moved into the new part and a soda fountain was also added. Mr. Kelsven also had dry goods in the old Knutson store building with a doorway opening between the two buildings. Mr. Kelsven sold to Chris Halvorson in 1941; he ran the business here for four years. The post office had been moved out and Chris had a restaurant and soda fountain in that area. For one year Ida Olson operated the cafe after Chris sold. Wm. Joersz bought the business from Chris in 1945; Bill later moved the dry goods into the new addition. Ed Reeff took over the operation when Bill moved to Mandan in 1949. In 1950 Don McDowell operated the grocery business for awhile. Ida Olson took over the dry goods department, buying it from Wm. Joersz and Iner Olson bought the grocery business from McDowell. Iner later sold to Ida Kronberger and Lorene Peterson. Ida and Lorene sold to Ernie Bachler, it was then known as Ernie's Main Mart. That was the last business to take place here. The building was bought by Enoch Willman, later purchased by Marshall Feland who uses it for storage.

*Congratulations Almont  
on your  
75th Anniversary*

**DON & MARION SHANNON**  
Almont, ND



**NORTHLAND**

RESTAURANT AND BAR SUPPLY CO., INC.





Restaurant and Bank - 1907 - Almont, ND

## FIRST STATE BANK BUILDING

The First State Bank Building was constructed in 1906, across from the Tischler Hotel. The bank was incorporated April 26, 1907, with capital stock of \$10,000. Shares were sold at \$100. Three Opfer brothers, who never lived here, had controlling stock. John O. Bondus was the cashier. Much of the stock changed hands in the fall of 1907; Chas. F. Peterson became President; C.L. Timmerman, Vice President. In 1909 a 10% dividend was declared.

On July 26, 1911, it was decided to dissolve the

business and merge with the Farmers State Bank. At that time N.E. Becklund and E.W. Hyde had controlling interest in the First State Bank.

The bank building was then used for various businesses. Jim Bateman had a pool hall there; Bennie Ringham had a cream station; it served as a dwelling for Wilbur Scharff and his mother. Otto Naucke, who was the last owner, had a feed store. The building burned in 1951.

# Cloverdale

Manufacturer — Packer — Distributor

Fresh Meats

Produce

Frozen



Smoked Meats

Grocery

Seafoods

*Congratulations Almont on your 75th Jubilee*



Distributor of

Sexton Products

Phone

663-9511



## BUILDINGS SOUTH OF POST OFFICE

The corner building was built by Dave Pederson, brother of Joe Pederson, in 1907 with living quarters upstairs. Dave had operated a store in Sims for a number of years. This business dealt in a variety of merchandise: groceries, dry goods, confectionary, etc. He had the postoffice, restaurant and rented the upstairs rooms. Norman Hansen tells that he had a tooth pulled by a dentist who had an office upstairs.

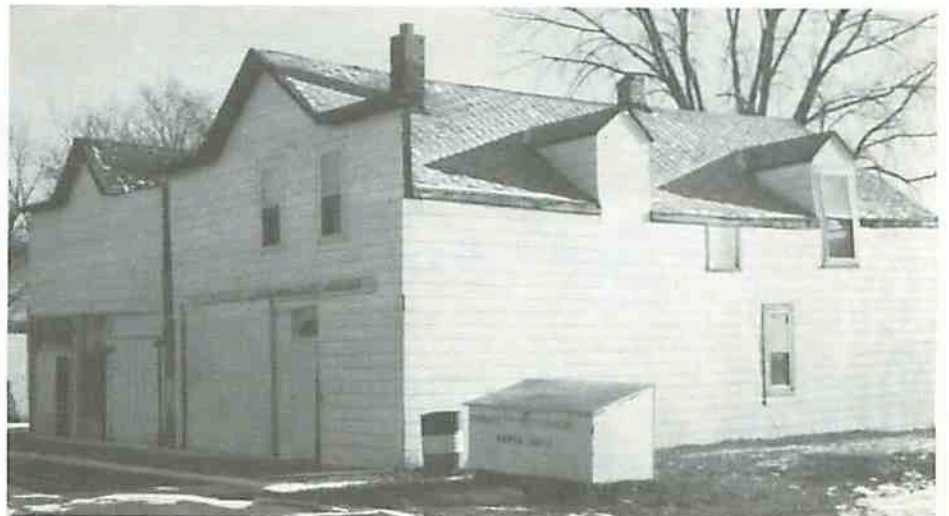


David Pederson

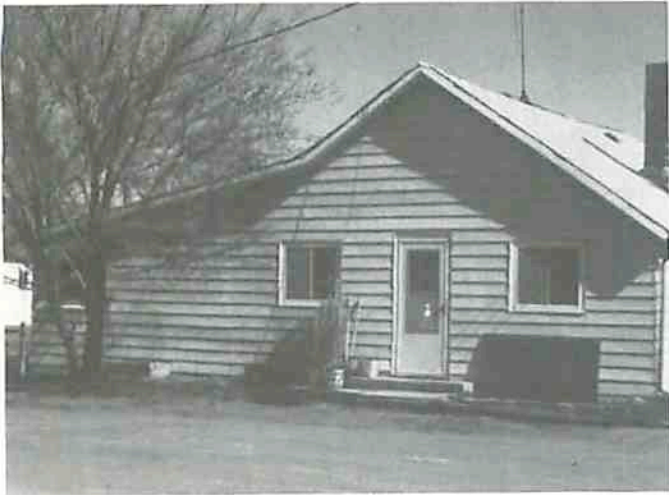
O.C. Ellingson was the next proprietor; he sold drugs, medicine and Baldwin pianos. Dr. Keats had an office there and served as druggist. The Mann Store Company of New Salem bought the business from Ellingson and Ervin Kruger managed it. This management had a close-out sale in 1925 and in 1926 Christ Halvorson started a general merchandise business and operated here until 1941 when he bought the Kelsven store. Albert Hasse bought the building, remodeled it and started an auto repair service until 1943 when he went into the armed service. During Albert's absence Stan Abraham operated the repair shop. After being discharged from the army, Albert again did repair work until he sold the building to Tony Hegel who resided upstairs. Through the years various families and roomers occupied the rooms upstairs. The building is now owned by Ben Ramsland and used for storage.

The next building was constructed by Ole Jacobson and Theodore Peterson in 1907. It was used for a dance hall and community building; basketball, wrestling and other sports took place there before the school gym was built. This building was empty for a few years after the Farmers Union Hall was built across from the elevator. Alvin

Olson started a meat market and sold out to Carl Hill in 1925. Mr. Hill also sold groceries. Jim Bateman and Arnold Torgerson had a bar there with Reinhart Schwemmer and Harry Adler the next ones to run the bar. Clint Wright bought the building and remodeled it for a service station, making living quarters in the rear. The next service station operator was DeVere Wohlman, followed by Chester Harper. Fred Ramsland bought cream there; the last one to buy cream was Alvin Peterson, about 1970. The last family to occupy the living quarters was the Elmer Smith family. It is now owned by Ben Ramsland and used for storage.







The residence of Beatrice Wanstrom was one of Almont's early business places that withstood the fires in the downtown area. It was first known as the Johnson Cafe and about 1915 Ben Bird operated a pool hall and restaurant which was later run by Oscar Olson. The Mike Falkenburg family dwelt here during the 20's and later the Nellie Olin family.

In 1934 and 1935 the Lloyd Schollaert family occupied the back portion of the building and the Ed Reefs and Sam Thiels lived in the front rooms. In the fall of 1941 the Irvin Olin family moved in; they also operated a cream buying station. The Fred Reetz family and later Elda Reetz and girls lived in the house in the 50's. Mrs. Selma Seim and Mrs. Beatrice Wanstrom have lived in the house for the past 18 years.



Cream Station

The first meat market in Almont was operated in this building located just north of the present Wanstrom home. It later became Bickel's Carpenter Shop and then John Knutson operated a beer parlor here for awhile. Ben and Fred Ramsland bought cream and turkeys in the building for several years. Alfred Olin was the last to reside there and it was torn down several years ago.



## Congratulations Almont

Art and Dolly Feland • Almont, ND 58520 • Phone 843-7024





## SHERWOOD HOTEL

The Sherwood Hotel built in 1907 was operated by Mr. Sherwood until he traded it to E.E. Erb for  $\frac{1}{4}$  section of land 10 miles south of Almont. When Mr. Erb discontinued operating the hotel, Frank Walker operated a pool hall and barber shop. The business was later bought by Casey Martin, who also was a barber. Jim Bateman operated a pool hall for several years and Hans Hansen, as we remember it, was the next operator. Hans sold to his cousin, Waldemar Hansen, in 1925. In 1932, when 3.2 beer became legal, Otto Olson established a bar there. In 1946 John Gillis moved to this building from his former location. Trygve Olson owned and operated the bar for several years and sold to Ted Hobein, the last one to occupy the building. The living quarters upstairs were usually occupied by the family of the operator. The building was torn down and lumber salvaged about 1960.



HOBBEIN BAR  
Red Olson, Donald Olson, Ted Hobein, Fritz Hoeger, Judy Zemple, Carl Falgren and Hobein children.





**Bill's Super Valu**

Mandan, North Dakota



# DEPARTMENTS & ASSOCIATIONS



L to R: standing - Mrs. Edith Skjolsvik, Mrs. Val Kary, Mrs. Ralph Erhardt, Mrs. Hazel Hoovestol, Mrs. Norman Hansen, Mrs. Lydia Schwemmer. Seated: Norman Hansen, Val Kary, Trygve Feland, Toby Ramsland, Ralph Erhardt and Alec Staab.

## MEALS-ON-WHEELS

By Hazel Hoovestol

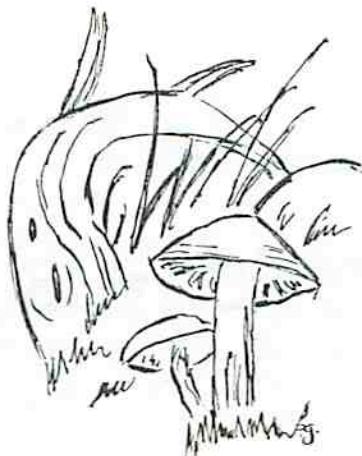
Almont's new Meals-on-Wheels program was started July 2, 1979, and celebrated its official grand opening on Aug. 29, 1979, with a ribbon-cutting ceremony. About 40 people attended including the city board, clergy, school superintendent, and Mrs. Vivian Rask of Mandan, Golden Age Director for Morton County. Taking part in the ribbon-cutting ceremony was Hazel Hoovestol, site manager; Pearl Tavis, cook; Mayor Claude Ritz, and Mr. and Mrs. Sig Peterson. The Petersons were recognized for starting the wheels turning on this very worthwhile hot meal program.

Meals-on-Wheels has met with considerable success in the small rural community of Almont. A hot meal is served each week day (Monday through Friday) for area residents over 60 years of age. "This program has really gone over big ... without a hitch," said Sig Peterson, who was instrumental in getting the program started. The first meal was served on July 2 with 21 individuals taking part. Since then an average of 12 to 15 participants have been served a hot, nutritious meal each day. The meals are prepared at the local cafe by Mrs. Pearl Tavis, and Hazel Hoovestol serves as manager of the program. The meals are served in Almont's Senior Center in the Memorial Hall by Hazel, assisted by local volunteers. Meals are prepared according to a menu which is drawn up a month ahead of time by a dietitian at the Mandan Hospital, for the Golden Age Services of Mandan for all Morton County sites.

Individuals participating in the program pay according to what they can afford up to \$1.50 per meal. The program receives assistance from federal fund grants. Since the meals are served in the Senior Center, the program serves another important function as well. It provides an opportunity for the people to get together and socialize after eating each day. We also have various parties and recreation days as well.



Enjoying a meal at the Nutrition Center.



Since the program started July 2, 1979 to Dec. 31, 1979, we served 1,457 meals; from Jan. 1, 1980 to Dec. 31, 1980, we served 2,842 meals. Total meals served during the 18 months of operation is 4,299 meals. We have lost several of our regular participants: three deceased and four in nursing or retirement homes, however, we have gained some new participants so the program is still doing well.



## ALMONT DEVELOPMENT ASSOCIATION



Almont low-rent housing.

Interest in building some low-cost housing units began early in 1968 and led to the organization of the Almont Development Association. It began with a \$3.00 membership the first year and \$5.00 the second year. Practically everyone in the community was a member. Some contributions were made, including \$50.00 from the Legion Auxiliary. One of the activities to raise funds was a kumpon supper and breakfast which netted over \$200.00.

Organization got into high gear in 1969, leading to obtaining a loan from F.H.A. for \$45,000 and getting the building that same year. Many meetings and much paperwork was accomplished. It began with nine directors and the community membership. Shingling and painting was done by local men and women volunteers. Other people helpful to us were Gerald Stenehjelm and Attorney R.W. Wheeler, who took care of our legal work and helped with our organization. Repayments have been made on schedule and all is progressing well.

Beginning in 1974 our units were rented to the Morton County Housing Authority which leaves only maintenance to the Almont Development Association.

This project has helped to keep reasonably priced housing available in our area. Our community has been and will continue to be rewarded for their efforts in this venture.

## ALMONT AMBULANCE SERVICE

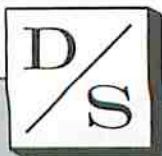


ALMONT AMBULANCE SQUAD

L to R: Lawrence Renner, Eugene Peterson, Eugene Stolberg.  
Front row: Clara Christianson, Pearl Olson, Pat Schermerhorn.

The Almont Ambulance Service is sponsored by the Commercial Club. The first ambulance was purchased from the New Salem Ambulance Department on April 15, 1970. A Red Cross training course was held with instructors from the State Health Department and Mandan; about 28 adults participated and received their Red Cross cards. Several training sessions have been held since. On Sept. 15, 1973, a later model ambulance was obtained from the Minot Air Base through Morton County Civil Defense.

In June of 1980, an advance Red Cross Cardio-pulmonary Resuscitation Class was held with Roland Larson of New Salem as instructor. Those taking part and receiving cards were: Lawrence Renner, Eugene Peterson, Rev. Clyde Graham, Gene Stolberg, Clara Christianson, Pearl Olson, Pat Schermerhorn and Donna Johnson. Almont's Ambulance Service is fully accredited with the State Health Department. The ambulance drivers and attendants have been willingly serving without remuneration.



### DAKOTA SURPLUS, INC.

Box 465 • Bismarck, North Dakota 58501 • Phone (701) 663-8200

Upholstery Material and Foam • All Type of Hose: Hydraulic, Neoprene, Vinyl, etc.

# CONGRATULATIONS ALMONT





## ALMONT FIRE DEPARTMENT

Top row: Clarence Nilles, Harvey Thorson, Rudy Feland, Eugene Peterson, Joel Olson, Don Schermerhorn, Eugene Thorson, Joel Johnson, William Bethke. Middle: Sig Peterson, Roman Peterson, Lester Feland, Conrad Christianson, William Kalvoda, Art Feland, Ed Jacobson, LeRoy Reinhardt. Front: Norman Hansen, Levi Dawson, Clara Christianson, Pat Schermerhorn, Pearl Olson, Claude Ritz, Ben Ramsland, Sam Thiel and Lawrence Renner.

On March 5, 1917, the first Almont Fire Department was organized. Almont had experienced two very destructive fires, one on June 4, 1910, when two grain elevators, a lumberyard and barn were destroyed and again, on Feb. 28, 1915, when the Timmerman store and four adjacent buildings went up in flames.

E.E. Erb was chosen Chief; C.E. Kelsven, Assistant Chief; E.E. Templeton, Trustee, and J.R. Sherwood, Trustee and Secretary. A two-wheeled chemical fire-fighting cart was purchased. It took four men to pull the cart and operate the fire engine. This equipment was stored in the former Almont Arena newspaper building.

On April 22, 1953, a reorganizational meeting was held. Ed Reeff was chosen fire chief; Harvey Thorson, assistant chief, and Fred Ramsland, secretary-treasurer. A used truck with fire-fighting equipment was purchased in September 1963 and stored in the memorial hall addition.

On Nov. 18, 1963, a Rural Fire Department was organized, taking in the city of Almont and the boun-



daries of the newly reorganized Sims School District No. 8. Directors were chosen from each of the outlying townships. Ed Reeff was selected fire chief and Carl Knudson, president. The State Fire Marshall was present to help organize. Membership dues were \$20.00 for rural patrons and \$10.00 for city

residents. A three mill tax levy is allowable; to date the levy has ranged from 0 to 2¼ mill. A four-wheel drive pickup was procured from the State School of Forestry, which is fully equipped and serves the needs very well. The present officers are: Levi Dawson, Chairman; Ben Ramsland, Secretary-Treasurer; Lawrence Renner, Chief and Director. Other directors are: Marshall Feland, Sam Thiel, Nick Weinberger, Dennis Olin, Ed Bachler, Carl Knudson and Rudolph Feland.



## FITTERER IMPLEMENT

White	Massey Ferguson	
Versatile	Melroe	Krause
Dual	Gehl	Morris

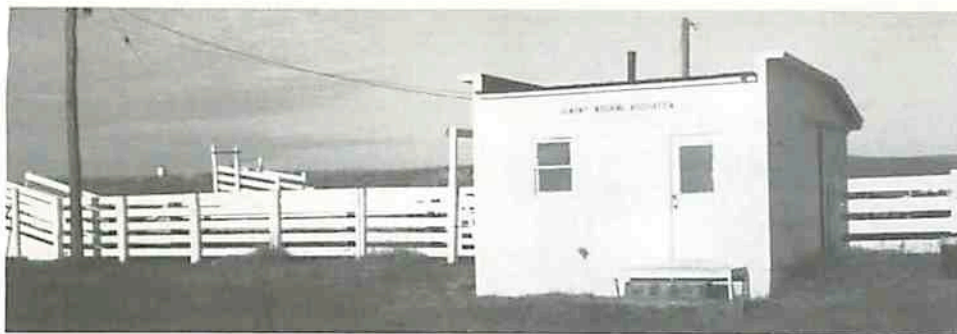
Glen Ullin, ND

**Phone: 348-3785**

Walter Fitterer - Owner-Manager

Res. Phone: 348-3550





## ALMONT WEIGHING ASSOCIATION



**ALMONT WEIGHING ASSOCIATION**  
L. to R. - Top: Clarence Nilles, Clarence Schollmeyer, Levi Dawson, Joel Johnson, William Bethke, Eugene Thorson, David Willman. Middle: Rudy Feland, Claude Ritz, Roman Peterson, Harvey Thorson, Lawrence Renner, Sam Thiel, LeRoy Reinhardt, Ed Jacobson. Seated: Eugene Peterson, Norman Hansen, Joel Olson, Sig Peterson, Art Feland, Lester Feland, Olaf Feland.

On March 8, 1965, 26 local men interested in livestock weighing facilities met in Almont to start the organization of the Almont Weighing Association. On April 5, 43 stockmen joined the association and accepted the by-laws. A 5-man board of directors was elected, namely: Jake Larson, President; Sig Peterson, Vice President; Robert Feland, Secretary-Treasurer; Olaf Feland and Milton Johnson, Directors.

A 10,000 pound scale, practically new, was purchased from Keith Rodenbough for \$600.00. This scale had formerly been used in the Carson stockyards. A 99-year lease for a suitable site was obtained from the city board. The association was incorporated as a non-profit organization. Membership dues were \$25.00 for those who helped with the construction, for others \$35.00. Weighing charges were set at 10 cents per head for members, 25 cents for non-members. A building was moved from Main Street for an office.

The first load of cattle was weighed in July 1965; steers at 24½ cents per lb. Since that time approximately 5,000 head of cattle have been weighed annually. The local ranchers have been fortunate having local buyers, Marvin and Joel Olson. Brand inspectors have been Robert Feland, Francis Pulver Jr. and Art Feland. Directors have included the original five and Levi Dawson, Warren Hoovestol, Art Feland, Lester Feland and Ed Bachler.

In 1970 the weighing facilities were remodeled, with Walt Neis as foreman. Present officers and directors are: Art Feland, President; Lester Feland, Vice President; Sig Peterson, Secretary-Treasurer; Milton Johnson and Ed Bachler. At present there are 96 members.

First load of cattle weighed at Almont Weigh Station - July 1965. Sig Peterson, consignee; Maynard Sholtz, buyer, and Bob Feland, brand inspector.



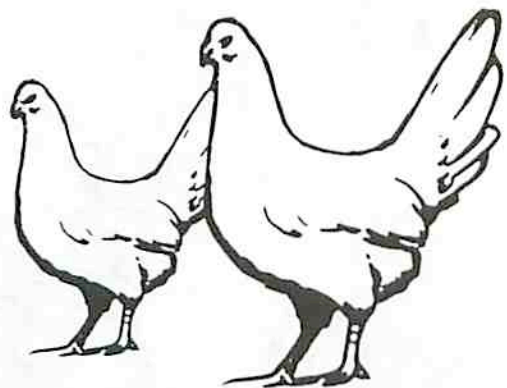


*Congratulations  
Almont, North Dakota  
On Your Seventy-fifth Jubilee*

from

**GOLD LABEL FEEDS**

BISMARCK, NORTH DAKOTA  
and  
WEST FARGO, NORTH DAKOTA



We thank the farmers and ranchers from Almont and Almont Service, your local Gold Label Feeds dealer, for your many years of patronage.

See Ed Thiel of Almont Service for quality GOLD LABEL FEEDS, featuring a full line of Beef, Dairy, and Hog Feeds, along with Gold Label CLS Controlled Release Liquid Supplement, Carnation Products, and Kendall Animal Health Products.

**GOLD LABEL  
POULTRY FEED  
PROGRAMS**

